

**14 LITRE PRESSURISED WATER BOTTLE**

The Mexco pressurised water container provides a mobile wet cutting solution to eliminate dust build up when operating cut-off saws. With up to 3 bar working pressure there is no requirement for an external water source connection. Supplied with a 2 metre hose and quick connection coupling.

**KEY FEATURES**

- 14 Litre Capacity
- Heavy Duty Casing
- Up to 3 bar Operating Pressure
- 2 Metre Flexi Hose
- Large Easy Fill Funnel
- Robust Pump Mechanism
- Pressure Relief Valve
- Adjustable Shoulder Strap
- Robust Carry Handle
- Quick Connector Supplied
- Stable Base



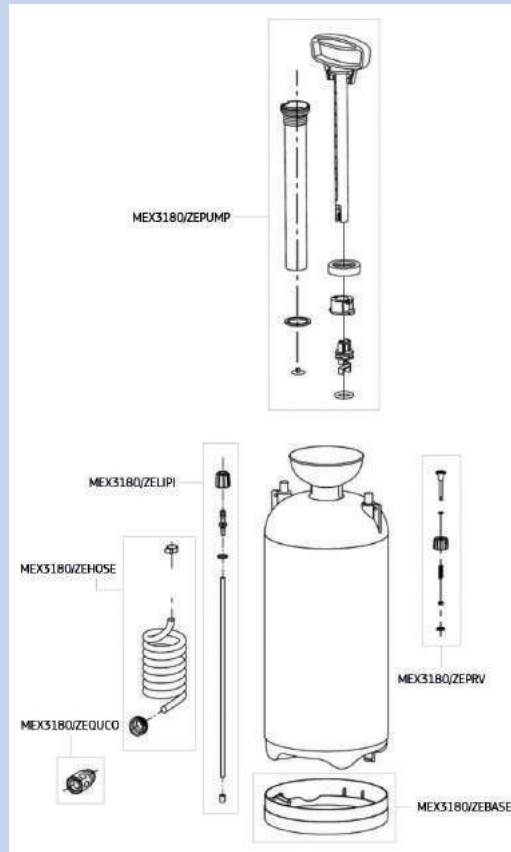
**PRODUCT OVERVIEW:**

**Max filling capacity:** 14 Litres  
**Internal size:** 15.5 Litres  
**Max spraying pressure:** 3 bar

**Max operating temperature:** 30°C  
**Weight when empty (inc. hose):** 2.3 kg  
**Construction Material:** Polyethylene

**PRODUCT DATA SHEET**

**SPARE PARTS:**



Code	Description
MEX3180/ZELIPI	Lift Pipe Assembly
MEX3180/ZEHOSE	Hose Assembly Kit
MEX3180/ZEQUCO	Quick Connector
MEX3180/ZEPRV	Pressure Valve Assembly Kit
MEX3180/ZEBASE	Replacement Base
MEX3180/ZEPUMP	Replacement Pump Handle Kit
MEX3180/ZESEAL	O Ring Set

**SUITABLE FOR USE ON:**

