

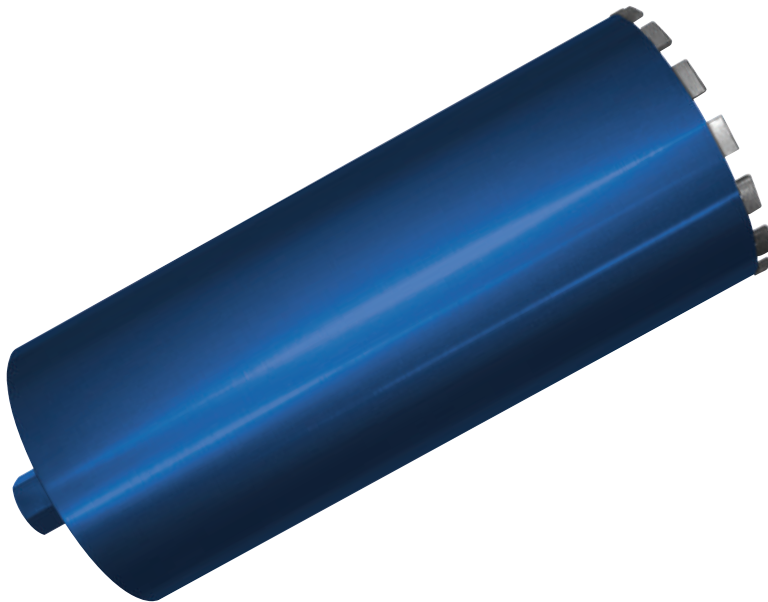


WCXCEL WET CORE DRILLS - 1 1/4" UNC FEMALE FITMENT

Mexco Professional Wet Core Drills have been developed to offer maximum effectiveness in the hardest of natural and manmade materials. These products have a laser welded segment to prevent segment loss and a rooftop segment for easier starting in harder materials.

KEY FEATURES

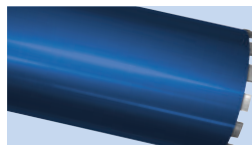
- Faster Starting Rooftop Segment
- Universal Reinforced Concrete Segment
- German Quality Barrels
- Cuts Flint, River Gravel and Limestone Aggregate Concrete



Faster Starting Rooftop Segment



1 1/4" UNC female fitment



German Quality Barrel

PRODUCT OVERVIEW:

Grade: XCEL
Barrel Type: Solid

Segment Type: Rooftop
Dry/Wet: Wet

XCEL | OPTIMUM COST PER CUT
GRADE

The XCEL range of products are simply our best in class, due to an uncompromised use of raw materials in their manufacture they offer the user a cutting or drilling experience that is faster and cleaner with an optimum cost per cut.



PRODUCT DATA SHEET

DIAMETERS AVAILABLE:

Code	Diameter (mm)	Length (mm)	Fitment
A11WC42	42	450	1 1/4" UNC
A11WC52	52	450	1 1/4" UNC
A11WC65	65	450	1 1/4" UNC
A11WC72	72	450	1 1/4" UNC
A11WC78	78	450	1 1/4" UNC
A11WC86	86	450	1 1/4" UNC
A11WC92	92	450	1 1/4" UNC
A11WC102	102	450	1 1/4" UNC
A11WC108	108	450	1 1/4" UNC
A11WC112	112	450	1 1/4" UNC
A11WC117	117	450	1 1/4" UNC
A11WC127	127	450	1 1/4" UNC
A11WC132	132	450	1 1/4" UNC
A11WC152	152	450	1 1/4" UNC
A11WC162	162	450	1 1/4" UNC
A11WC178	178	450	1 1/4" UNC
A11WC182	182	450	1 1/4" UNC
A11WC200	200	450	1 1/4" UNC
A11WC250	250	450	1 1/4" UNC

SUITABLE FOR USE ON:

CORE DRILL MACHINES IN ACCORDANCE WITH MANUFACTURERS HANDBOOK



APPLICATION:

- Granite
- Class A Engineering Brick
- Clay Pipes And Pavious
- Hard Slate
- Hard Facing Brick
- River Gravel Aggregate Concrete
- Flint Aggregate Concrete
- Reinforced Concrete
- Concrete Kerbs
- Soft Facing Brick
- Concrete Blocks 3.5 - 15Kn
- Hard Sandstone
- Coarse Sandstone
- Soft Slate
- Breeze Block
- Lignacite Blocks
- Asphalt Over Concrete *
- Asphalt *



Brick



Soft Stone



Reinforced Concrete

● **RECOMMENDED** to cut these materials

● **Will cut these materials** with the possibility of reduced lifetime / glazing

* Special segments required for this application
Please contact us for details

PRODUCT DATA SHEET