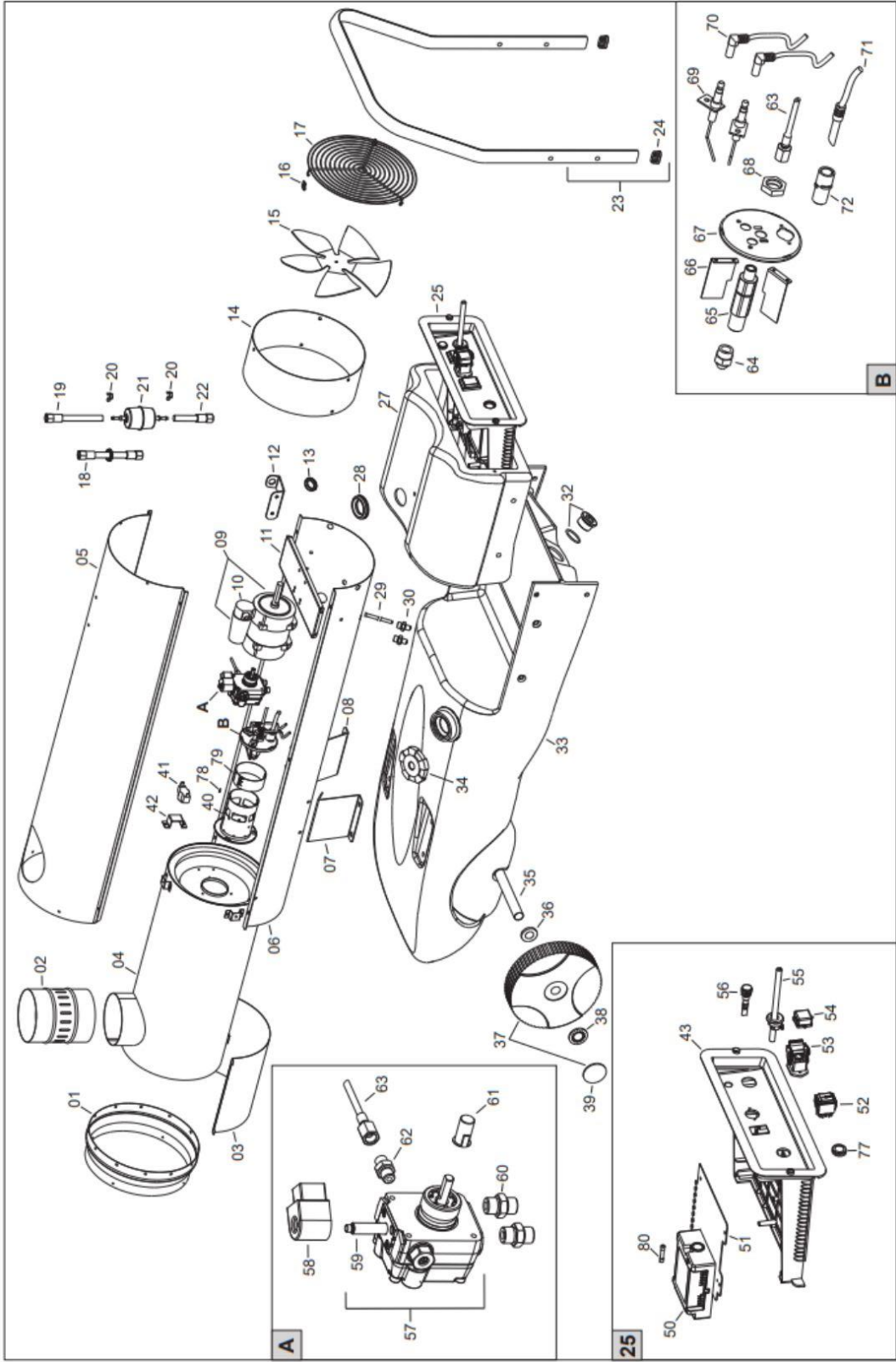


BIEMMEDUE EC32 Heater HRP0017-0





A

B

25

PL 07/11			From S/N
POS	P/N	LEGENDA	DESCRIPTION
01	G06075-3001	-	Outlet cone
02	G06077	Ø 150	Chimney fitting
03	G06079	-	Insulating panel
04	G06301	-	Combustion chamber
05	G06300-3001	-	Upper body
06	G06271-3001	-	Lower body
07	G06065-9005	SX	Chassis support bracket
08	G06088-9005	DX	Chassis support bracket
09	E10692	200 W - 230V - 50Hz	Motor
10	E11246	6,3 µF	Capacitor
11	G06217	-	Motor support bracket
12	G06068-9005	-	Power cord support
13	C30352	Ø 15mm - Ø22 mm	Cable protection
14	G06070-3001	-	Air conveyor
15	T10207	Ø 300 18°	Fan
16	M20412	U42-182 B	Lock plate
17	P30165	-	Inlet grill
18	I40328	L = 300mm - 1/4" FF	Flex diesel pipe
19	I40327	L = 180mm - 1/4" FF	Flex diesel pipe
20	C30729	Ø12,5 - 14,5/6 CLIC120	Clip
21	I30414	Ø6 - Ø8	Filter
22	I40326	L = 85mm - 1/4" FF	Flex diesel pipe
23	P20173-9005	-	Handle
24	C30361	15x30	Pipe cap
25	G00309	-	El. control box
27	P50129	-	Control box cover
28	C30372	Ø 25,4mm - Ø34,9 mm	Cable protection
29	I30696	L = 220mm	Suction pipe
30	I30737	1/4" M - M12x1,75 M	Brass fitting
32	C30380	M30x1,5	Drain cap
33	P50130	42 l	Fuel tank
34	C30356	Ø 76	Tank cap
35	P20179-9005	Ø 20	Wheel axle
36	M20110	Ø21 x Ø37 x 3	Washer
37	C10543	Ø 200 - Ø 20,5	Wheel
38	M20203	Ø 20	Elastic washer
39	C10513-R	Ø 200 - 250	Red wheel cover
40	G06181	-	Blast tube
41	E50109	-	Safety thermostat
42	G06221	-	Thermostat support bracket
43	G06153	-	El. control box panel
50	E40128	REDGUN01 - 230V	Flame control box
51	G06184	-	Support plate
52	E10102-P	I - 0 - II	Switch

PL 07/11			From S/N
POS	P/N	LEGENDA	DESCRIPTION
53	E20640	3P+T	Thermostat plug
54	E20665	-	Thermostat plug cover
55	E30448	L = 1,5m - SCHUKO	Power cord
56	E11030	230V	Lamp
57	T20456	SUNTEC CSV 30	Diesel pump
58	T20458	SUNTEC CSV 30 - 230 V	Solenoid coil
59	T20461	SUNTEC CSV	Solenoid valve body
60	I20104	1/4"M - 1/4"M	Iron fitting
61	E10698	SIMEL	Motor-pump coupling
62	I20115	1/8"M - 1/8"M	Iron fitting
63	I40192	L = 250mm 1/8"F - 1/8"F	Micropipe
64	T20361	DELAVAN 0,55 GPH 80° W	Nozzle
65	I33007	-	Nozzle support
67	G06228	-	Burner support disc
68	I31034	M14	Brass lock nut
69	E10248	-	Ignition electrode
70	G02078	L = 1000 mm	H.T. Cable connect.
71	E40131	GENIUS - L = 1 m	Photocell
72	E50327	-	Photoresistor support
77	E20418	-	Stop button protection
78	E20671	6,3x0,8 mm	Terminal board
79	G06183	-	Air adjustment shutter
80	G01077	-	Diffuser ring